

Muda wa kungoja baada ya kunyunyizia na kabla ya kuvuna

- Kahawa siku 45 - Maharagwe siku 14
- Ngano siku 35-40

Muda kabla ya kuingia: masaa 12 kwa waridi na "carnations"

JINSI YA KUTUMIA

TWIGA-EPOX ni dawa ya kunyunyiziwa katika mimea. Hakikisha ya kwamba wakati wa kunyunyizia, sehemu zote za mmea zinafikiwa na dawa ya kutosha. Jaza tanki la bomba na maji safi mpaka nusu yake, kisha weka kiwango cha **TWIGA-EPOX** kilichopendekezwa, koroga kisha endelea kujaza huku ukitingiza mpaka bomba lijae. Hakikisha tanki linatingizwa wakati dawa inapoendelea kunyunyiziwa shambani.

UPATANIFU

TWIGA-EPOX hupatana na madawa mengine yanayotumika katika kuzuia magonjwa au kuua wadudu katika mimea. Hata hivyo mkulima asichanganye **TWIGA-EPOX** na madawa mengine katika bomba ila tu baada ya majaribio yake binafsi kabla ya matumizi kuakikisha ya kwamba mchanganyiko huo unaweza kupatana, unafaa, na ni salama katika hali hiyo.

MADHARA KWA MMEA

TWIGA-EPOX haina madhara kwa mimea ikiwa itatumika kulingana na maelezo yaliyopendekezwa.

UBORA NA FAIDA YA KUTUMIA TWIGA-EPOX

- Dawa mpya aina ya triazole iliyo na nguvu na uwezo mkubwa wa kuzuia magonjwa.
- Inatumika kuzuia magonjwa aina mbali mbali katika mimea tofauti.
- Ina uwezo mkubwa wa kupenya na kusambaa katika sehemu zote za mmea hivyo basi kupeana kinga inayoitajika.
- Inazuia na kuponya magonja ambayo husababisha hasara kubwa kwa kuharibu wingi na uzuri wa mazao, upeana kinga ya muda mrefu dhidi ya magonjwa yaliyotajwa.
- Haina madhara kwa mimea ikitumika kulingana na maelezo.
- Haina madhara kwa wadudu wenye manufaa kwa mkulima (beneficial organisms)
- Imetengenezwa kwa utaalumu wa hali ya juu hivyo basi ni rahisi kutumia na kunyunyizia
- Inaweza kuchanganywa na madawa mengine wakati wa kunyunyiziwa hivyo basi mkulima anapun guza gharama ya vibarua.

TAHADHARI WAKATI WA MATUMIZI

- Usivute sigara, usinywe wala usile wakati unatumia dawa hii.
- Chunga isiingie machoni. Vaa miwani ya kuingia macho unapotumia dawa hii.
- Hepukana na mvuke wa hii dawa na pia chungu kujiweka wazi kwa hii dawa. Vaa glovu za raba kwa mikono, vaa chombo cha kufunikia pua na mdomo unaponyunyizia hii dawa, vaa nguo za kujikinga kama shati ya mikono mirefu, suruali ndefu na gambuti za raba.
- Baada ya kumaliza kunyunyizia, oga mwili wote na uoshe nguo zako za kazi

MAZINGIRA NA MBUGA ZA WANYAMA

TWIGA-EPOX ni sumu kwa samaki na wanyama wengine wanaoishi majini. Usichafue njia za maji kwa kutupa ndani uchafu wa dawa. Weka mifugo mbali na maeneo yaliyowekwa au kunyunyiziwa dawa.

TWIGA-EPOX haina madhara kwa wadudu wenye manufaa kama vile nyuki ikiwa itatumika kulingana na kipimo kilichopendekezwa.



Powdery Mildew



Leaf spots



Bean Rust

ALWAYS READ THE LABEL BEFORE USING THE PRODUCT

TWIGA-EPOX

Epoxiconazole 250g/litre

250 SC

SUSPENSION CONCENTRATE

Fungicide for the control of powdery mildew on roses, rust and ring spot on carnations, rust, anthracnose and angular leaf spot on French beans; yellow and stem rust on wheat and coffee leaf rust in coffee.



Reliability & Value

TWIGA CHEMICAL INDUSTRIES LTD.

P.O. Box 30172, NAIROBI-KENYA, Tel: 020-3942000, Fax: 020-3942405

Email: - info@twiga-chem.com Website: - www.twigachemicals.com



WhatsApp
0742 967 573

TWIGA-EPOX 250 SC

A broad spectrum and protective fungicide for the control of a wide range of fungal diseases in various crops.

Active ingredient: Epoxiconazole 250g/litre

Formulation: Suspension Concentrate

Registration NO: PCPB(CR) 0879



DESCRIPTION AND MODE OF ACTION

TWIGA-EPOX is a broad spectrum protective and curative systemic triazole fungicide for effective and long lasting control of a wide range of fungal diseases in various crops. Upon application **TWIGA-EPOX** penetrates the plant and is distributed through out the plant system. Treated areas of the plant and new leaves/shoots formed after the fungicide application are protected from infection.

Infection is prevented as result of certain interactions between epoxiconazole and the fungal cells which result in loss of fungal cell viability.

APPLICATION TIMING

Application should start as soon as first signs of disease appear on the crop and repeated every ten to fourteen (10-14) days as may be necessary depending on the disease pressure.

DIRECTIONS FOR USE

Crops	Diseases	Dosage	
		Lt/ha /1000L of water	Ml/20L of water
French beans	Anthracoese, Angular leaf spots Rust	0.5	10ml/20Lt of water
Roses	Powdery mildew	0.5	50ml/100Lt of water
Carnations	Rust Ring spots	0.5	50ml/100Lt of water
Wheat	Yellow rust, Stem Rust	0.5 -0.7	50-70ml/100Lt of water
Coffee	Coffee Leaf rust	0.3	10ml/20Lt of water
	Remark:	- Apply as a preventative spray preferably in January. - Apply in a program with Copper Fungicides. Do not exceed two applications in one season.	

PRE-HARVEST INTERVAL

- 45 days in Coffee - French beans - 14 days - Wheat 35-40 days

RE-ENTRY INTERVAL

Roses and carnations - 12hrs

METHOD OF APPLICATION

TWIGA-EPOX can be applied by leaf surface spraying. Thorough wetting of the crop must be ensured. Half-fill the spray tank with clean water, add the necessary quantity of **TWIGA-EPOX** and stir, then top up with water. Keep on agitating when filling and during spray operations

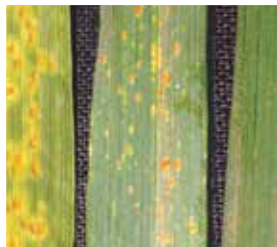
COMPATIBILITY

TWIGA-EPOX is compatible with most commonly used pesticides.

However, DO NOT tank mix with any product unless your own prior testing has shown that the combination is physically compatible, effective and non-injurious under your conditions.

PHYTOTOXICITY

TWIGA-EPOX is not phytotoxic when used as recommended.



Leaf rust

ADVANTAGES OF TWIGA-EPOX

- New and highly potent fungicide in the triazole group
- Broad Spectrum activity - Controls many fungal diseases in various crops.
- Systemic in action-has excellent protection for new growth from within. The active ingredient penetrates into the plant and is distributed continuously and evenly through out the leaf tissue.
- Both protective and curative –thus flexible in application timing and long spray intervals offering long periods of protection against the target diseases
- No phytotoxicity when used as recommended.
- No effect on beneficial organisms and natural enemies
- Suspension Concentrate formulation –easy and convenient handling
- Can be tank mixed with other products during application thus saves on labour and time.

SAFETY PRECAUTIONS.

- Do not smoke, drink or eat while using this product.
- Avoid eye contact. Wear safety goggles when handling the product.
- Avoid spray mist and exposure to the product. Wear rubber gloves, mask covering nose and mouth. Wear protective clothing such as long sleeved shirts, long pants and rubber boots when handling the product.
- After application wash yourself and your work clothes.

ENVIRONMENT AND WILDLIFE

- In soil **TWIGA-EPOX** is degraded by microbial activity.
- The product is toxic to fish. Do not contaminate water sources and supplies by disposal of product waste.
- Keep livestock out of treated areas. **TWIGA-EPOX** is not toxic to natural enemies and beneficial insects such as bees and wasps when used at recommended rates.

MAELEZO

TWIGA-EPOX ni dawa maalum ya kuzuia magonjwa tofauti katika mimea. Inafanya kazi kwa kukinga mimea dhidi ya viini vya 'fungus' ambavyo usababisha magonjwa katika mimea. Wakati **TWIGA-EPOX** inaponyunyiziwa kwenye mimea, inapenya na kusambaa katika sehemu zote za mmea. Sehemu zilizonyunyiziwa **TWIGA-EPOX** hukingwa vizuri dhidi ya magonjwa.

WAKATI WA KUTUMIA DAWA

TWIGA-EPOX yafaa kunyunyiziwa kwenye mimea wakati hali ya anga inaoenkana kuwa muafaka kwa magonjwa kuingia katika mimea au wakati dalili za magonjwa zimeanza kuonekana. Dawa inafaa kurudiwa baada ya kila siku kumi hadi kumi na nne (siku 10-14) kulingana na vile ugonjwa umesambaa.

MAELEZO YA KUTUMIA DAWA

Mmea	Magonjwa	Kipimo	
		Lita /hektari /Lita 1000 ya maji	Mililita kwa kila lita 20 ya maji
"French beans"	"Anthracoese", "Angular leaf spots" "Rust"	0.5	Mililita 10 kwa kila lita 20 ya maji.
Waridi	"Powdery mildew"	0.5	Mililita 50 kwa kila lita 100 ya maji
"Carnations"	"Rust", "Ring spots"	0.5	Mililita 50 kwa kila lita 100 ya maji
Ngano	"Yellow rust", "Stem Rust"	0.5 -0.7	Mililita 50-70 kwa kila lita 100 ya maji
Kahawa	Coffee Leaf Rust	0.3	Mililita 10 kwa kila lita 20 ya maji
	Maelezo:	- Nyunyiza dawa kabla ya ugonjwa kuingia, ikiwezekana mwezi wa January. - Tumia kwa programu na madawa ya shaba. Usitumie zaidi ya mara mbili katika msimu mmoja	