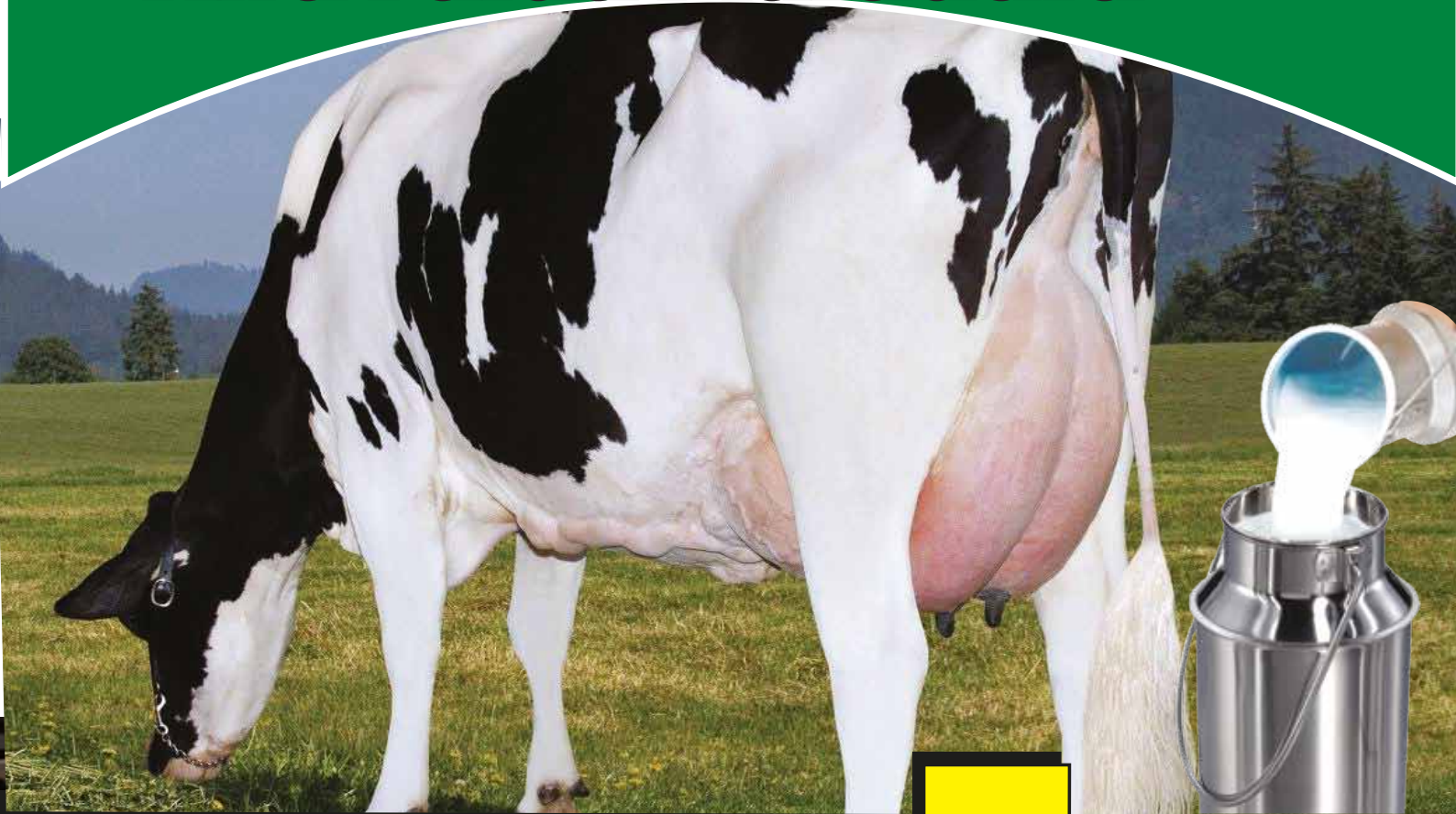


# TWIGALICK

## MAZIWA MAX

**A HIGH PHOSPHORUS**  
Dairy mineral  
supplement

### Kwa Faida Maradufu



**Contains Powdered Rumen Stable fat,  
spray dried molasses and trace elements**



Mix the  
supplement with  
other feeds and  
/or feed free  
choice to the  
animals



**DISTRIBUTED BY:-**

**TWIGA CHEMICAL INDUSTRIES LTD**

Nanyuki Rd, Industrial Area, P.O. Box 30172, 00100 GPO, Nairobi-Kenya,

Tel: +254 (020) 3942300 Fax: + 254 (020) 3942405

Email: [Info@twiga-chem.com](mailto:Info@twiga-chem.com)

[www.twigachemicals.com](http://www.twigachemicals.com)

# TWIGALICK

## MAZIWA MAX

### A HIGH PHOSPHORUS DAIRY MINERAL SUPPLEMENT POWDER

Contains Powdered Rumen Stable fat for high energy source, spray dried molasses for increased palatability and energy source and enhanced trace elements to prevent mineral imbalance

#### ANALYSIS OF TWIGALICK MAZIWA MAX

#### CATEGORY 2

Calcium - 18%	Zinc - 5200mg/kg	Selenium - 28mg/kg	Manganese - 3100mg/kg
Phosphorus - 12%	NaCl - 16%	Cobalt - 85mg/kg	
Powdered fat - 10%	Copper - 1800mg/kg	Iodine - 310mg/kg	
Sprayed dried molasses - 5%		Magnesium - 2.5%	

#### TWIGALICK MAZIWA MAX

- Is a high phosphorus mineral supplement for increased milk production in dairy cattle
- Has Powdered fat for high energy source
- Has spray dried molasses for increased palatability and energy source.
- Has enhanced trace elements to prevent mineral imbalance

#### Why use TWIGALICK MAZIWA MAX

- To increase milk production
- To improve heat onset in dairy cattle hence one calf per year per cow
- To prevent loss of condition in newly calved cows as TWIGALICK MAZIWA MAX has Powdered Rumen Stable fat and molasses as energy sources
- Prevents pica i.e. eating of foreign bodies e.g. polythene, garments, wood, plastics etc.

#### Feeding recommendations

- Lactating cows 120-150g per day per cow
- Bulling heifers 100g per day
- In calf cows 120g per day

