

## FIRST AID INSTRUCTIONS

**In case of eye contact:** Flush the eyes with running water for at least 15 minutes while holding eyelids open to help flush out material. Contact a physician immediately.

**In case of skin contact:** Wash contaminated skin with soap and plenty of water. Remove contaminated clothing. If skin irritation persists, contact a physician immediately.

**In case of inhalation:** Remove the patient away from contaminated area and place the patient in a well-ventilated area and give artificial respiration. Keep warm and at rest. Consult a doctor.

**In case of ingestion:** If a small amount is swallowed, drink plenty of water and induce vomiting. Repeat until fluid is clear. If a large amount is ingested (i.e. one mouthful), induction of vomiting should be considered if patient is fully conscious and less than 30 minutes has elapsed since ingestion. Never give anything by mouth to an unconscious person. Contact a physician immediately.

## TOXICOLOGICAL INFORMATION

**Symptoms of poisoning:** Non-specific. However, it is expected that following ingestion, oral discharge, fecal staining, soft stool, fine tremors and respiratory irritations may occur.

### Antidote

No specific antidote is known.

## FEATURES AND BENEFITS

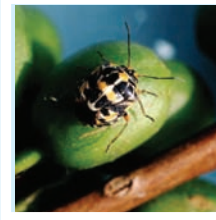
❖ Broad spectrum	Can be applied to a wide range of crops against many insect pests.
❖ Excellent systemic and translaminar properties	Effective uptake ensures rainfastness and longer residual activity.
❖ Long lasting effect	Due to long residual effect.
❖ High potency	Less usage of active ingredient per unit area hence minimum chemical load in the environment.
❖ Low toxicity	Non-teratogenic and non-mutagenic, and well tolerated by plants.



Aphids



Whiteflies



Antestia bugs

**ALWAYS READ THE LABEL BEFORE USING**

# TWIGA ACE<sub>20SL</sub>

**Acetamiprid 200g/lit.**

**A broad-spectrum systemic insecticide for the control of aphids, whiteflies, leafminers and thrips on frenchbeans, and roses; and squash beetles, aphids, whiteflies, thrips in cucurbits; Russian wheat aphids in wheat; thrips, antestia bug and leafminer in coffee.**



**Reliability & Value**

TWIGA CHEMICAL INDUSTRIES LTD.

P.O. Box 30172, NAIROBI-KENYA, Tel: 020-3942000, Fax: 020-3942405

Email:- info@twiga-chem.com Website:- www.twigachemicals.com



YouTube

Instagram



LinkedIn



WhatsApp

0742 967 573

## DESCRIPTION

A systemic insecticide for the control of aphids, thrips, leafminers and whiteflies in roses and french beans, also for control of squash beetle, thrips, aphids and whiteflies in squash, control of Russian wheat aphids in wheat and control of thrips, antestia bugs and leafminers in coffee.

## ACTIVE INGREDIENT

Acetamiprid 200g/l

**FORMULATION:** Soluble Concentrate

## MODE OF ACTION

Acetamiprid is a neonicotinoid compound, active by contact and ingestion, showing high systemic and translaminar action. It works by interfering with the transmission of stimuli in the insect central nervous system leading to paralysis and eventual death.

## DIRECTIONS FOR USE

Target pests and application method.

Crop	Target Pest	Application Rate (Spray volume 1000 lt of Water)	Application Rate for Small Holders
French beans	Aphids, Whiteflies, thrips, leafminers	200-250 ml/ha	8ml /20Lt
Squash	Squash beetles, Thrips, Aphids and Whiteflies	200 ml/ha	8ml /20Lt
Wheat	Russian wheat aphids	200-250 ml/ha	8ml /20Lt
Roses	Aphids, Thrips, Whiteflies, Leafminers	200 ml/ha	20ml in 100Lt of water
Coffee	<i>Thrips, antestia bugs and leafminers</i>	250 ml/ha	10ml /20Lt

### Pre-Harvest Interval:

**Frenchbeans:** 5 days,

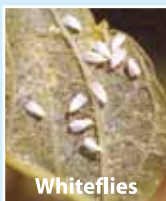
**Squash:** 3 days,

**Wheat:** 10 days

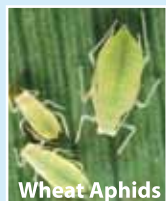
### Re-Entry Interval:

**Roses:** 3 Hrs,

**Coffee:** As soon as sprays dries on the leaves.



Whiteflies



Wheat Aphids



Leafminer



Thrips



Coffee

## METHOD OF APPLICATION

TWIGA ACE 20SL is mainly applied by leaf surface spraying. Thorough wetting of the crop must be ensured. Put a small quantity of water in the spray tank to the recommended quantity of TWIGA ACE 20SL and stir, then top up with water. Shake the product before pouring and thoroughly rinse the container and then add the rinsates to the spray mixture. Keep on agitating when filling and during spray operations.

## COMPATIBILITY

TWIGA ACE 20SL is compatible with most commonly used pesticides except those with alkaline reaction such as Bordeaux mixture and lime sulphur. However, DO NOT tank mix with any product unless your own prior testing has shown that the combination is physically compatible, effective and non-injurious under your conditions.

## PHYTOTOXICITY

TWIGA ACE 20SL is not phytotoxic when used as recommended.

## HANDLING PRECAUTIONS

Do not smoke, drink or eat while using this product.

Avoid eye contact. Wear safety goggles when handling the product.

Avoid spray mist and exposure to the product. Wear rubber gloves, mask covering nose and mouth. Wear protective clothing such as long sleeved shirts, long pants and rubber boots when handling the product.

After application wash yourself and your work clothes.

Do not enter treated area within 24 hours of application unless protective clothing is worn.

## STORAGE

Store in original, tightly closed container away from children, food, drinks and livestock feedstuffs.

Store in a cool, dry and well ventilated area under lock and key. Avoid exposure to direct sunlight.

Kept under these conditions, the shelf life of TWIGA ACE 20SL is 2 years.

## DISPOSAL

Small quantities of surplus product, if unused should be disposed off on a landfill site approved for pesticides or bury in a safe place away from water sources. Do not use empty container for any other purpose. Empty containers are to be triple rinsed, flattened, perforated, and disposed off on a landfill site or buried in a safe place away from water sources.

## SPILLAGE AND LEAKAGE

Remove contaminated soil layer and bury in a safe place away from water sources and human habitation.

## Spillage

Soak up with sand, sawdust, soil or binding agent. Collect the contaminated material thoroughly and bury in a safe place or put it in a waste bin or a plastic bag, mark it and dispose off on a landfill site approved for pesticide. Contaminated sawdust to be burnt away from human dwellings. Clean spilled area with plenty of water. Spilt product must not be re-used.

## ENVIRONMENT AND WILDLIFE

The product is toxic to fish and aquatic invertebrates. Do not contaminate water sources and supplies by disposal of product waste.

Keep livestock out of treated areas. TWIGA ACE 20SL is toxic to natural enemies and beneficial insects such as bees and wasps. Do not apply when bees are actively foraging.